

US Army Corps of Engineers

Jacksonville District

SAFETY ON THIS JOB DEPENDS ON YOU

Table with columns: No., Symbol, Zone. Contains a grid of empty cells for data entry.

DEPARTMENT OF THE ARMY
JACKSONVILLE DISTRICT, CORPS OF ENGINEERS
JACKSONVILLE, FLORIDA

Designed by: WRM
Checked by: GHR
Drawn by: WRM
Reviewed by: WRM
Date: MAR 2020

XXXXXXXXXXXXXXXXXXXX
XXXXXXXXXXXXXXXXXXXX
XXXXXXXXXXXXXXXXXXXX
XXXXXXXXXXXXXXXXXXXX
XXXXXXXXXXXXXXXXXXXX
XXXXXXXXXXXXXXXXXXXX
XXXXXXXXXXXXXXXXXXXX
XXXXXXXXXXXXXXXXXXXX
XXXXXXXXXXXXXXXXXXXX
XXXXXXXXXXXXXXXXXXXX

PROJECT CONDITION SURVEY FY20
10-FOOT PROJECT
PLAN
OKEECHOBEE WATERWAY (WEST ZONE)
CALOOSAHATCHEE RIVER
DEE COUNTY, FLORIDA
VICINITY OF C-TEN CALOOSA MARINA

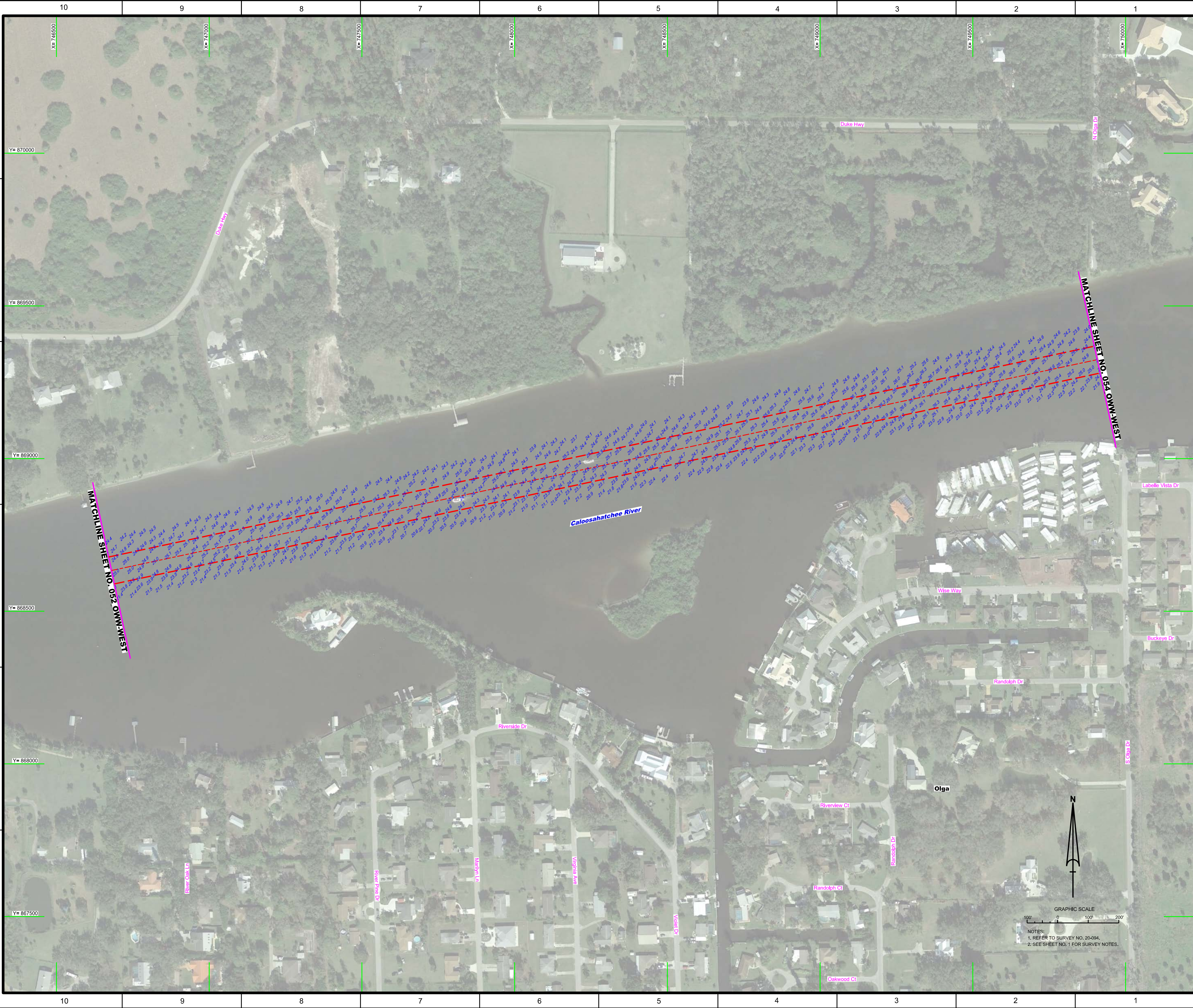
Scale: AS SHOWN

Drawing no.
52

SHEET 52 OF 64



NOTES:
1. REFER TO SURVEY NO. 20-094.
2. SEE SHEET NO. 1 FOR SURVEY NOTES.



F
E
D
C
B
A

10 9 8 7 6 5 4 3 2 1



US Army Corps of Engineers
Jacksonville District

SAFETY ON THIS JOB
DEPENDS ON YOU

NO.	SYMBOL	ZONE

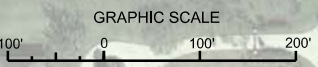
DEPARTMENT OF THE ARMY
JACKSONVILLE DISTRICT, CORPS OF ENGINEERS
JACKSONVILLE, FLORIDA

Checked By: GHR
Designed By: WRM
Drawn By: WRM
Project No.: 20-094
Contract: MAR 2020
Reference File: J:\094\HPS\LOMMWEST.DGN
Plot Name: J:\094\HPS\LOMMWEST.DGN

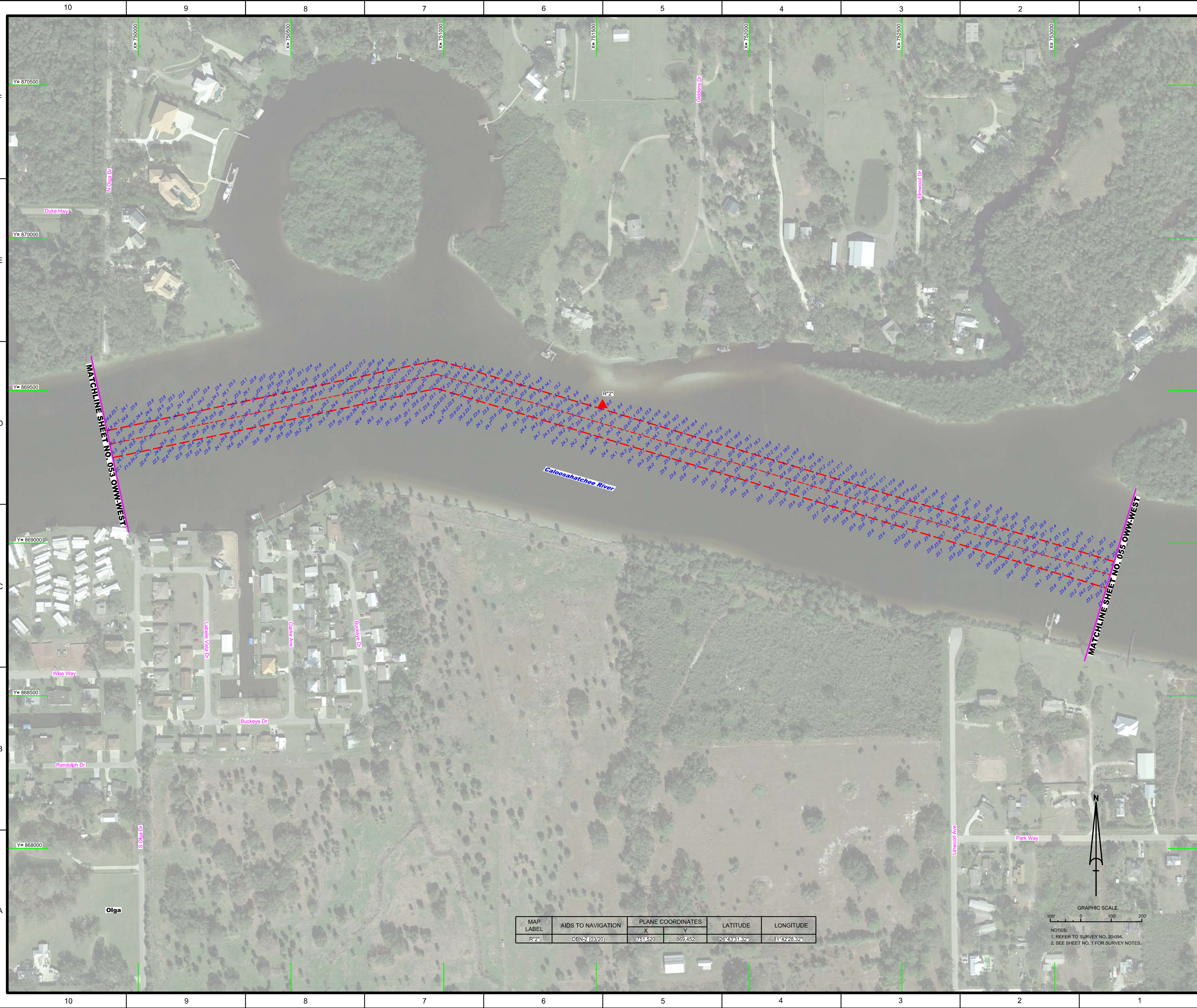
OKEECHOBEE WATERWAY (WEST ZONE)
CALOOSAHATCHEE RIVER
ALCOA COUNTY, FLORIDA
PROJECT CONDITION SURVEY FY20
10-FOOT PROJECT
VICINITY OF CALGA
PLAN


Scale: AS SHOWN
Drawing no.
53
SHEET 53 OF 64

F
E
D
C
B
A



NOTES:
1. REFER TO SURVEY NO. 20-094.
2. SEE SHEET NO. 1 FOR SURVEY NOTES.





US Army Corps
of Engineers
Jacksonville District

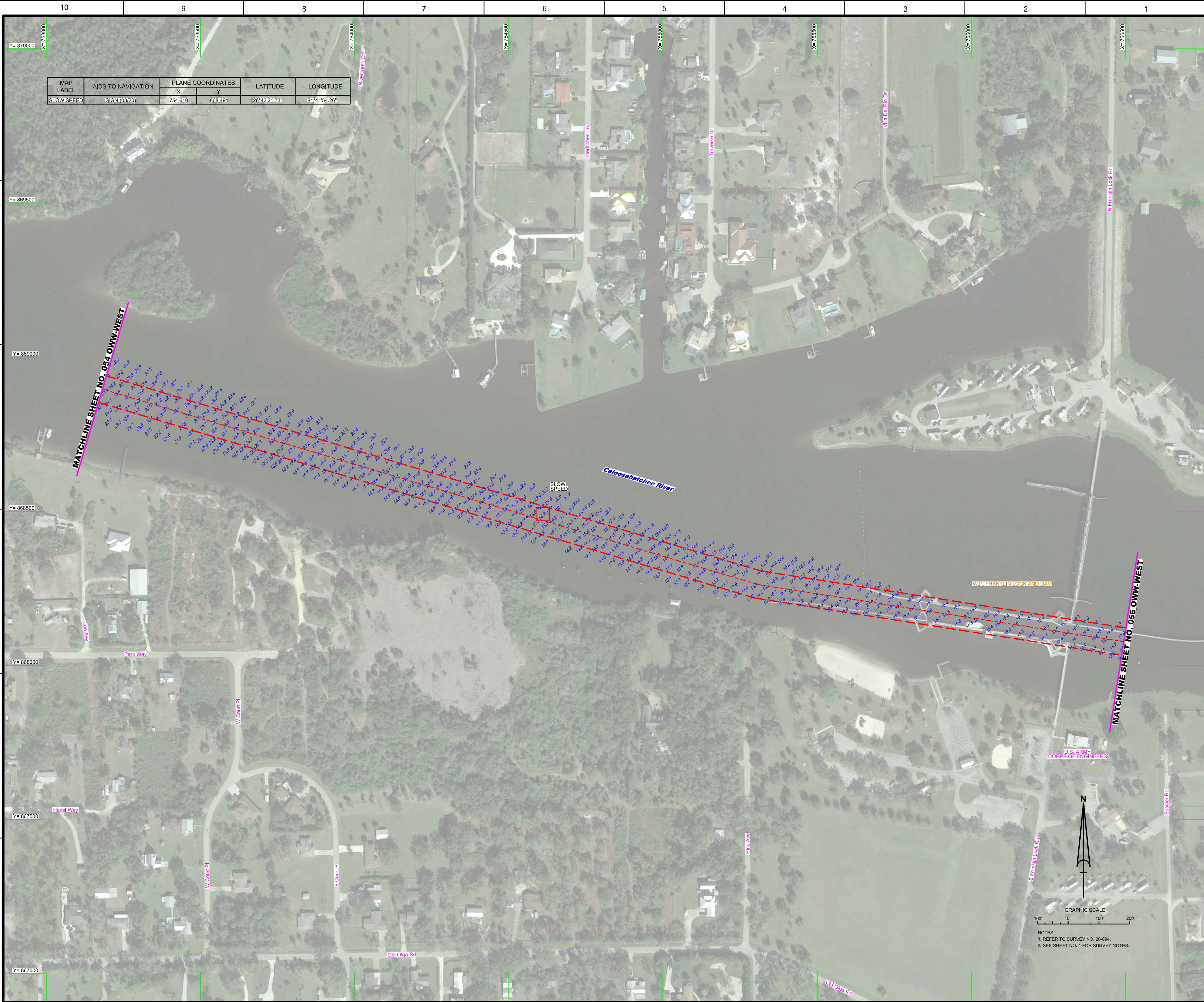
SAFETY ON THIS JOB
DEPENDS ON YOU

Project Information		Design Information	
Project Name	PROJECT CONDITION SURVEY FY20 10-FOOT PROJECT AREA NORTH OF OLGA PLAN	Drawn By	WRM
Location	OKEECHOBEE WATERWAY (WEST ZONE) CALOOSAHATCHEE RIVER DEE COUNTY, FLORIDA	Checked By	GHR
Scale	AS SHOWN	Design Date	MAR 2020
Drawing no.	54	Revision	
SHEET 54 OF 64		Reference File: 2019-HYDRO-OWW-WEST.DGN	


MAP LABEL	AIDS TO NAVIGATION	PLANE COORDINATES		LATITUDE	LONGITUDE
		X	Y		
R2*	DBN-2 (03/20)	751,520	869,452	29°43'11.82"	-81°42'28.32"

GRAPHIC SCALE
100' 0 100' 200'

NOTES:
1. REFER TO SURVEY NO. 20-084.
2. SEE SHEET NO. 1 FOR SURVEY NOTES.



MAP LABEL	AIDS TO NAVIGATION	PLANE COORDINATES		LATITUDE	LONGITUDE
		X	Y		
SLOW SPEED	SIGN(03/20)	754,610	868,491	28°43'21.73"	81°41'54.26"

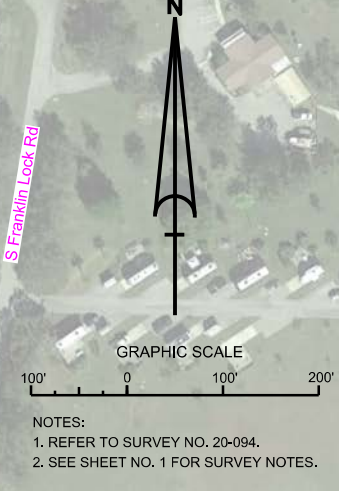


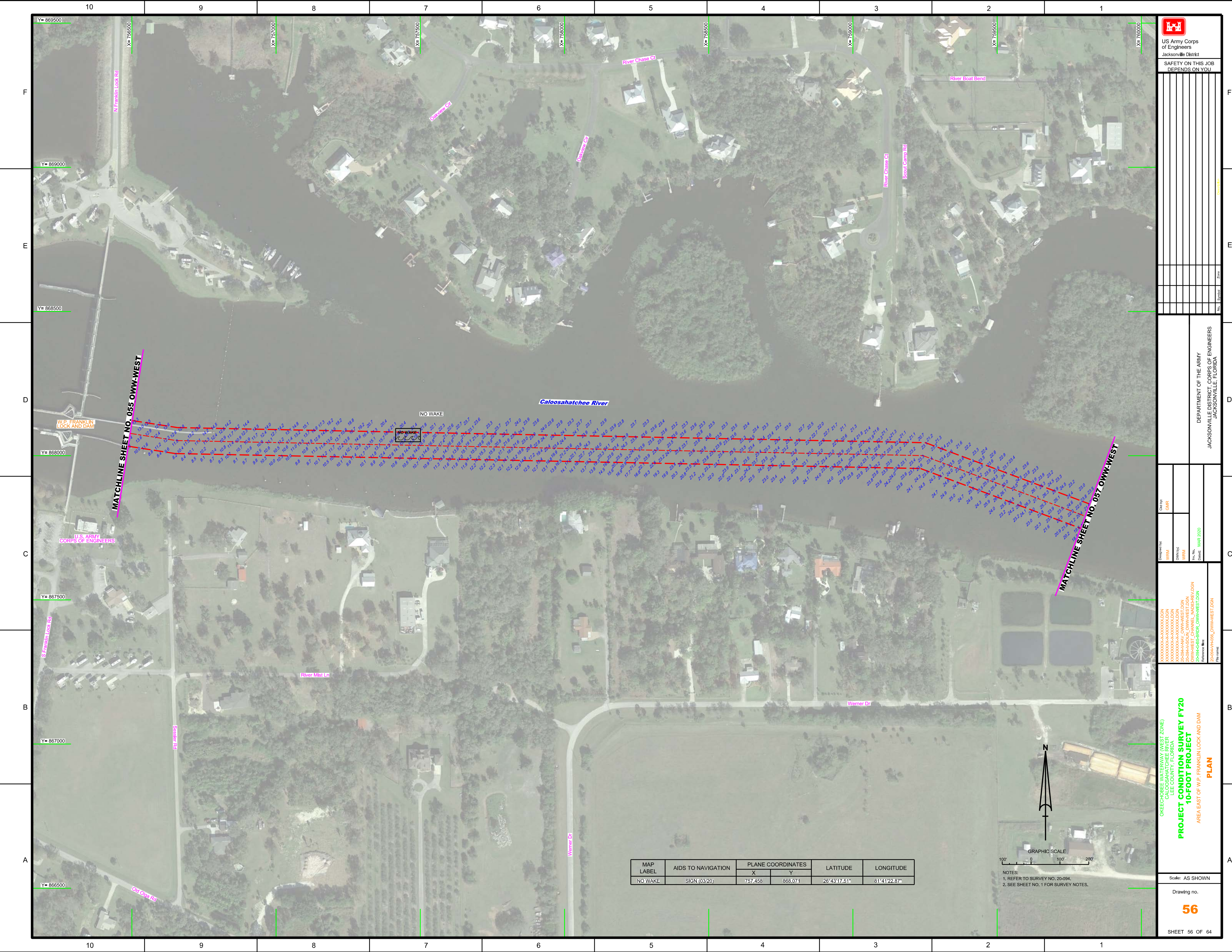
US Army Corps of Engineers
Jacksonville District
SAFETY ON THIS JOB DEPENDS ON YOU

DEPARTMENT OF THE ARMY
JACKSONVILLE DISTRICT, CORPS OF ENGINEERS
JACKSONVILLE, FLORIDA

Checked By: GHR
Designed By: WRM
Drawn By: WRM
Project No.: OWW-WEST CHANNEL MODIFICATION
File No.: OWW-WEST CHANNEL MODIFICATION
Date: MAR 2020
Reference File: J2018-HRBL_OWW-WEST.DGN
File Name: J2018-HRBL_OWW-WEST.DGN

OKEECHOBEE WATERWAY (WEST ZONE)
CALOOSAHATCHEE RIVER
VICINITY OF W.P. FRANKLIN LOCK AND DAM
PROJECT CONDITION SURVEY FY20
10-FOOT PROJECT
PLAN





 US Army Corps of Engineers Jacksonville District SAFETY ON THIS JOB DEPENDS ON YOU	Date	
	Checked	
	Reviewed	
	Approved	
	Scale	
	Title	
	Author	
	Plotter	
	Date	
	Scale	
DEPARTMENT OF THE ARMY JACKSONVILLE DISTRICT, CORPS OF ENGINEERS JACKSONVILLE, FLORIDA		

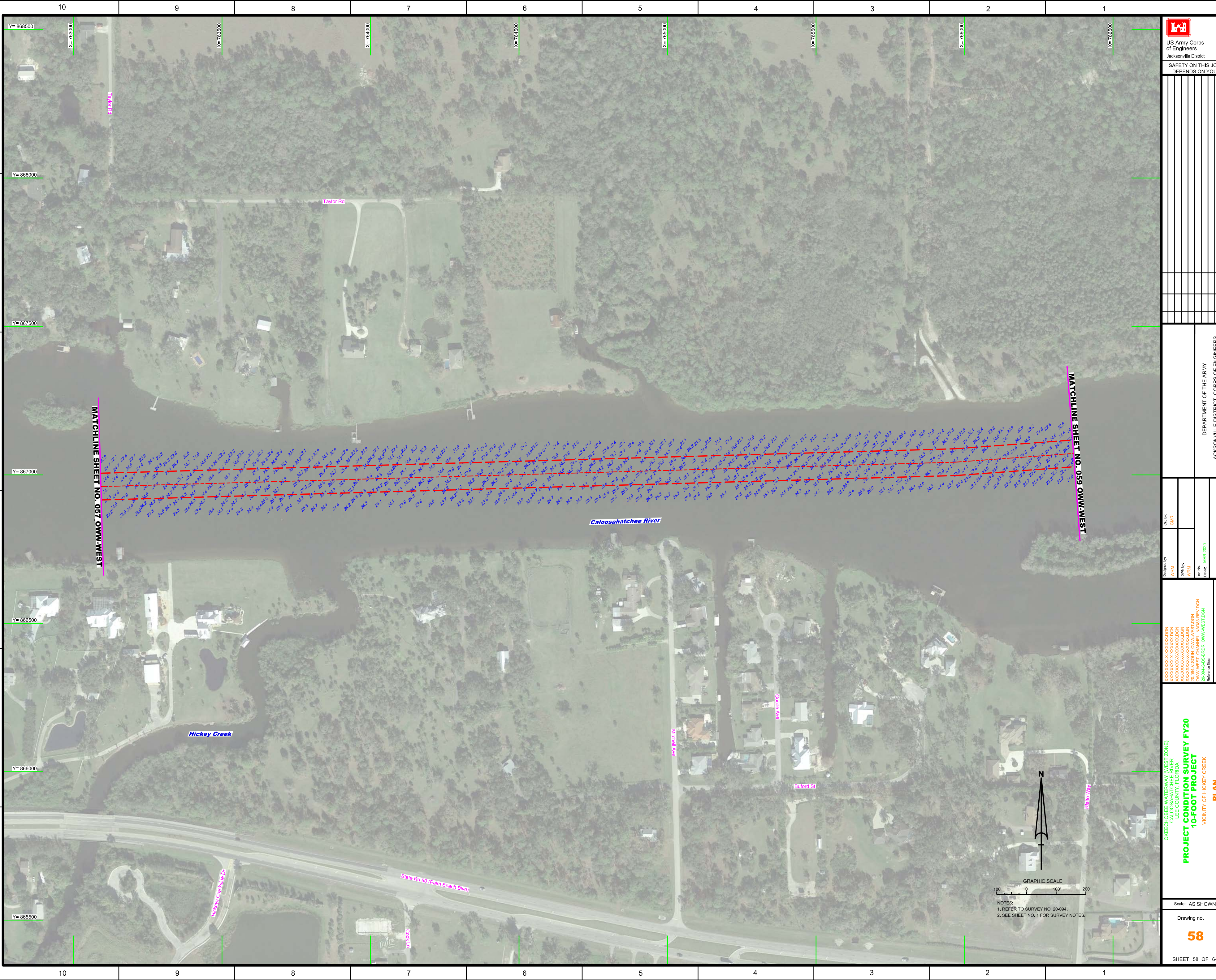
MAP LABEL	AIDS TO NAVIGATION	PLANE COORDINATES		LATITUDE	LONGITUDE
		X	Y		
NO WAKE	SIGN (03/20)	757.458	868.071	26°43'17.51"	81°41'22.87"



OKEECHOBEE WATERWAY (WEST ZONE)
 CALOOSAHATCHEE RIVER
 DEE COUNTY, FLORIDA
PROJECT CONDITION SURVEY FY20
10-FOOT PROJECT
 AREA EAST OF W.P. FRANKLIN LOCK AND DAM
PLAN

Cal by: GHR
 Designed by: WRM
 DWG No: WRM
 Date: MAR 2020
 Reference files: \\J298H\PROJ\OWM\WEST.DGN
 \\J298H\PROJ\OWM\WEST.DGN

Scale: AS SHOWN
 Drawing no.
56
 SHEET 56 OF 64



<p>US Army Corps of Engineers Jacksonville District</p> <p>SAFETY ON THIS JOB DEPENDS ON YOU</p>	
<p>DATE</p>	<p>TIME</p>
<p>DRAWN BY</p>	<p>CHECKED BY</p>
<p>DATE</p>	<p>DATE</p>
<p>SCALE</p>	<p>ZONE</p>
<p>PROJECT NO.</p>	<p>DRAWING NO.</p>
<p>DEPARTMENT OF THE ARMY JACKSONVILLE DISTRICT, CORPS OF ENGINEERS JACKSONVILLE, FLORIDA</p>	

MATCHLINE SHEET NO. 057 OWM-WEST

MATCHLINE SHEET NO. 059 OWM-WEST

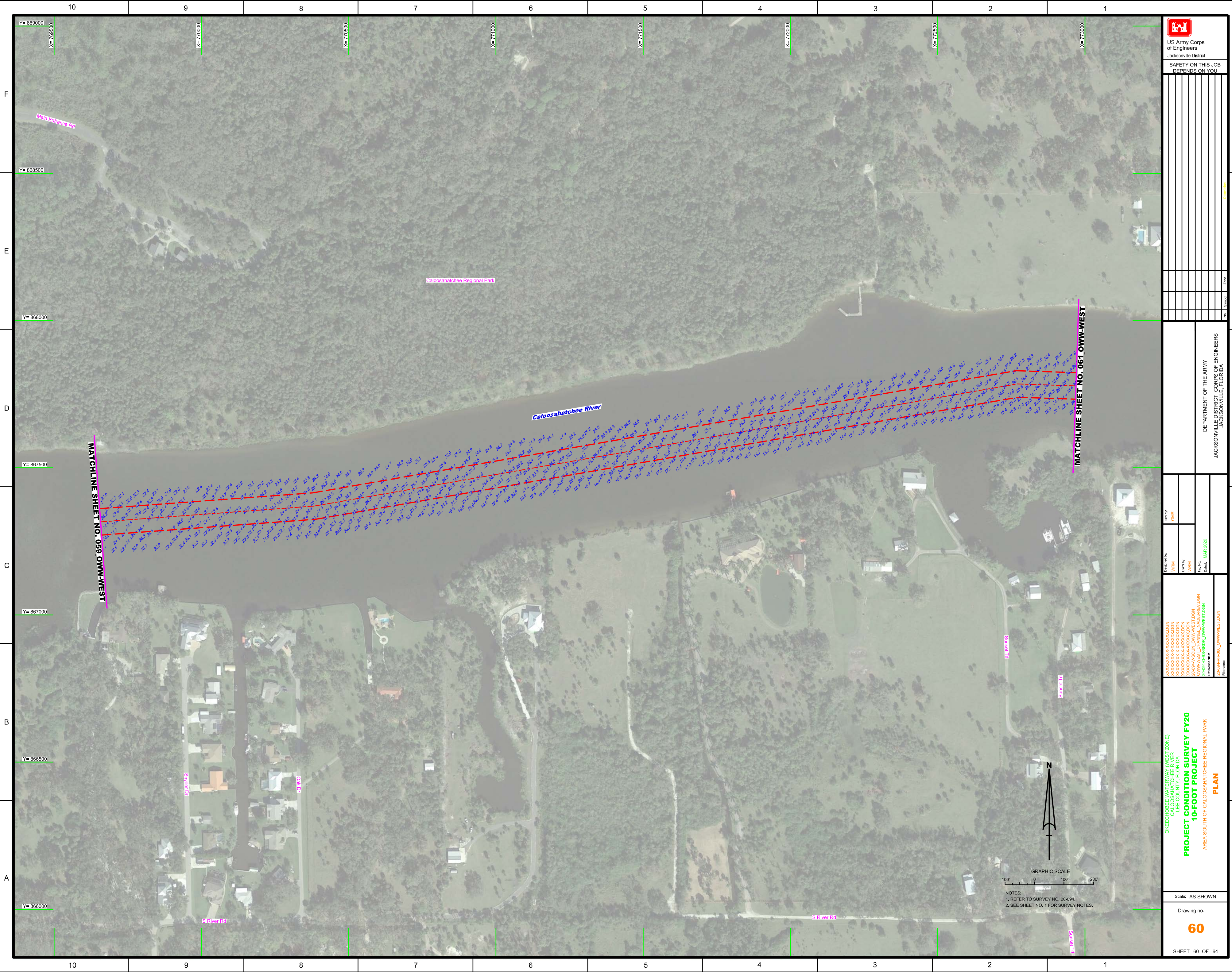
XXXXXXXXXXXXXXXXXXXX
 XXXXXXXXXXXXXXXXXXXX
 XXXXXXXXXXXXXXXXXXXX
 XXXXXXXXXXXXXXXXXXXX
 XXXXXXXXXXXXXXXXXXXX
 OWM-WEST CHANNEL (A00)REV (DON
 OWM-WEST CHANNEL_OWM-WEST.DGN
 Reference files
 J:\984\HHS\O_WW\WEST.DGN
 File name


OKECHOBEE WATERWAY (WEST ZONE)
 CALOOSAHATCHEE RIVER
 BEE COUNTY, FLORIDA
**PROJECT CONDITION SURVEY FY20
 10-FOOT PROJECT**
 VICINITY OF HICKEY CREEK
PLAN

Scale: AS SHOWN
 Drawing no.
58
 SHEET 58 OF 64



NOTES:
 1. REFER TO SURVEY NO. 20-094.
 2. SEE SHEET NO. 1 FOR SURVEY NOTES.





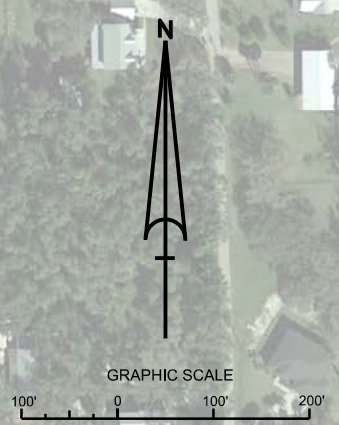
 US Army Corps of Engineers
 Jacksonville District
 SAFETY ON THIS JOB
 DEPENDS ON YOU

DEPARTMENT OF THE ARMY
 JACKSONVILLE DISTRICT, CORPS OF ENGINEERS
 JACKSONVILLE, FLORIDA

Checked By: GHR
 Designed By: WRM
 DWN By: WRM
 File Name: 20200303-000000.DGN
 Project: OWWEST CHANNEL (ADDBREV.DGN)
 Date: MAR 2020
 Reference File: 20190403-000000.DGN

OKEECHOBEE WATERWAY (WEST ZONE)
 CALOOSAHATCHEE RIVER
 BEE COUNTY, FLORIDA
PROJECT CONDITION SURVEY FY20
10-FOOT PROJECT
 AREA SOUTH OF CALOOSAHATCHEE REGIONAL PARK
PLAN

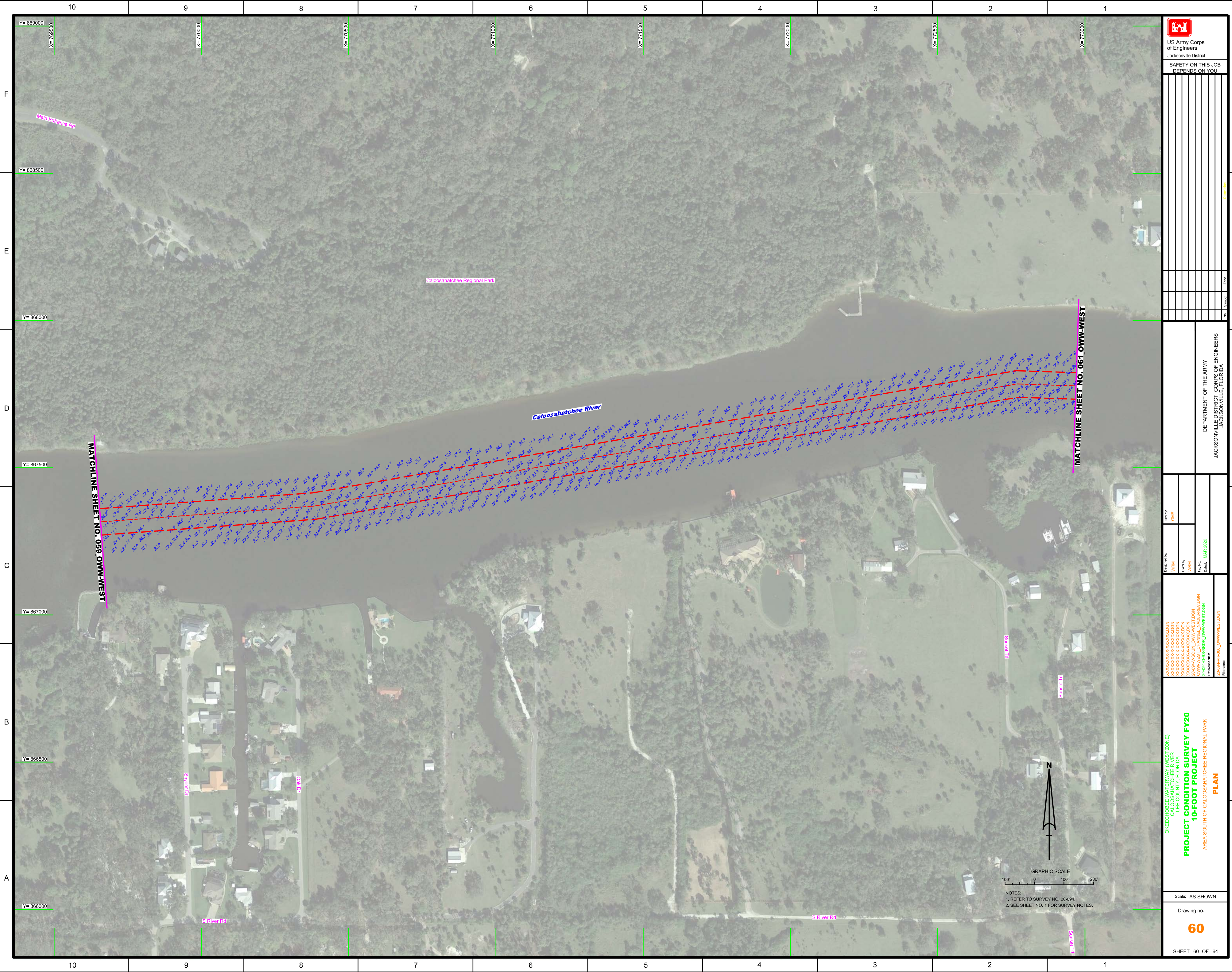
Scale: AS SHOWN
 Drawing no.
60
 SHEET 60 OF 64

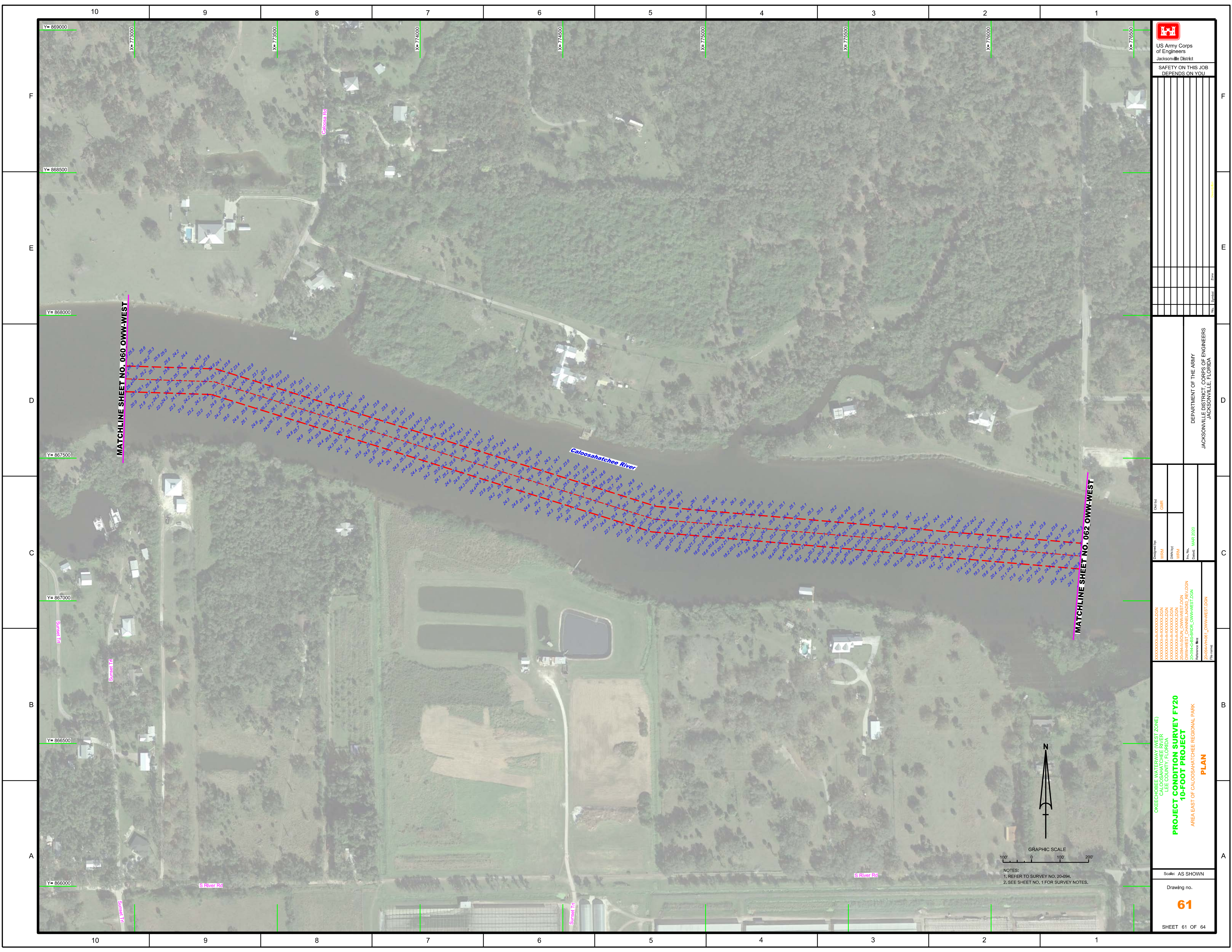


NOTES:
 1. REFER TO SURVEY NO. 20-094.
 2. SEE SHEET NO. 1 FOR SURVEY NOTES.

MATCHLINE SHEET NO. 059_OWM-WEST

MATCHLINE SHEET NO. 061_OWM-WEST





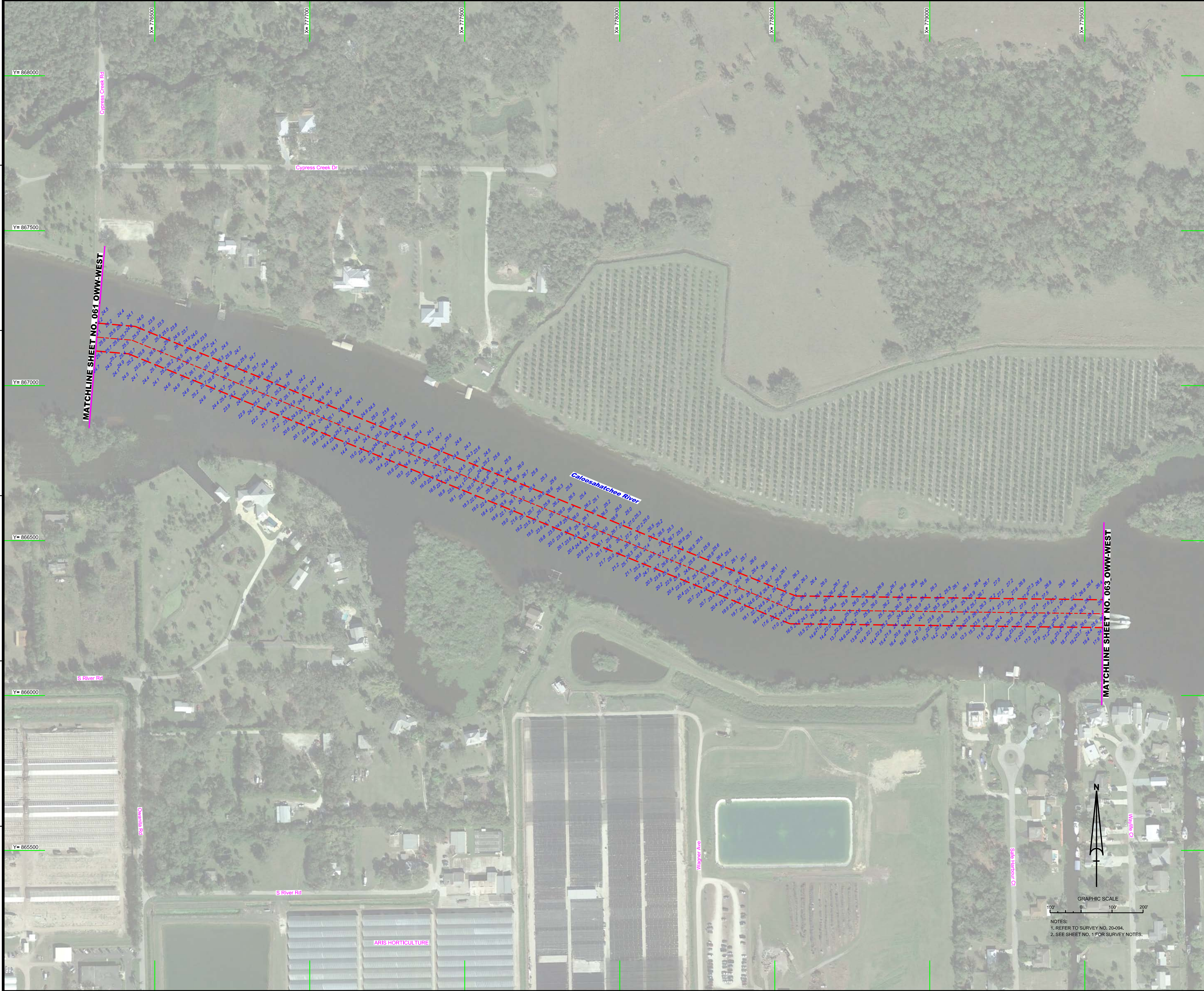
US Army Corps of Engineers
 Jacksonville District
 SAFETY ON THIS JOB
 DEPENDS ON YOU


Department of the Army Jacksonville District, Corps of Engineers Jacksonville, Florida	Checked By: GHR Drawn By: WRM File Name: 20-094-03-REV-2020
--	---

OKEECHOBEE WATERWAY (WEST ZONE)
 CALOOSAHATCHEE RIVER
 BEE COUNTY, FLORIDA
PROJECT CONDITION SURVEY FY20
10-FOOT PROJECT
 AREA EAST OF CALOOSAHATCHEE REGIONAL PARK
PLAN

Scale: AS SHOWN
 Drawing no. **61**
 SHEET 61 OF 64

GRAPHIC SCALE
 0 100 200
 NOTES:
 1. REFER TO SURVEY NO. 20-094.
 2. SEE SHEET NO. 1 FOR SURVEY NOTES.



 <p>US Army Corps of Engineers Jacksonville District</p>	
<p>SAFETY ON THIS JOB DEPENDS ON YOU</p>	
<p>Checked By:</p>	<p>GHR</p>
<p>Designed By:</p>	<p>WRM</p>
<p>Drawn By:</p>	<p>WRM</p>
<p>File No:</p>	<p>MAR 2020</p>
<p>Project Name:</p>	<p>OWW-WEST CHANNEL ADJUST REV/DON</p>
<p>Reference File:</p>	<p>Z:\GIS\HARRIS_OWW-WEST.DGN</p>
<p>Project Title:</p>	<p>OKEECHOBEE WATERWAY (WEST ZONE) CALOOSAHATCHEE RIVER LEE COUNTY, FLORIDA PROJECT CONDITION SURVEY FY20 10-FOOT PROJECT AREA NORTH OF ARIS HORTICULTURE PLAN</p>
<p>Scale:</p>	<p>AS SHOWN</p>
<p>Drawing no.</p>	<p>62</p>
<p>SHEET 62 OF 64</p>	

GRAPHIC SCALE
 0 100 200
 NOTES:
 1. REFER TO SURVEY NO. 20-094.
 2. SEE SHEET NO. 1 FOR SURVEY NOTES.

